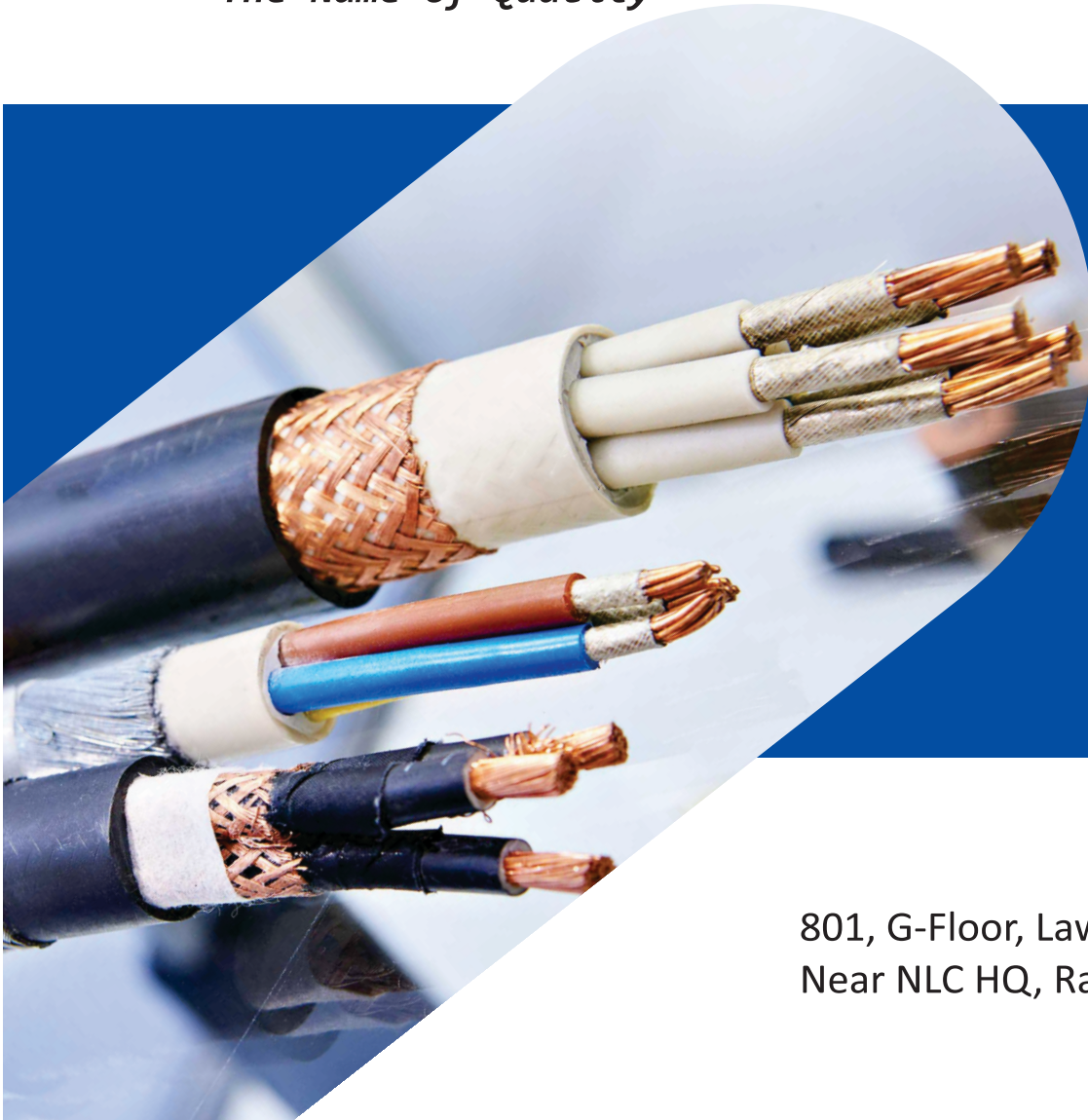




The Name of Quality



ROYAL WIRE & CABLES (PVT) LTD.

The Name of Quality

801, G-Floor, Lawrence Lane,
Near NLC HQ, Rawalpindi

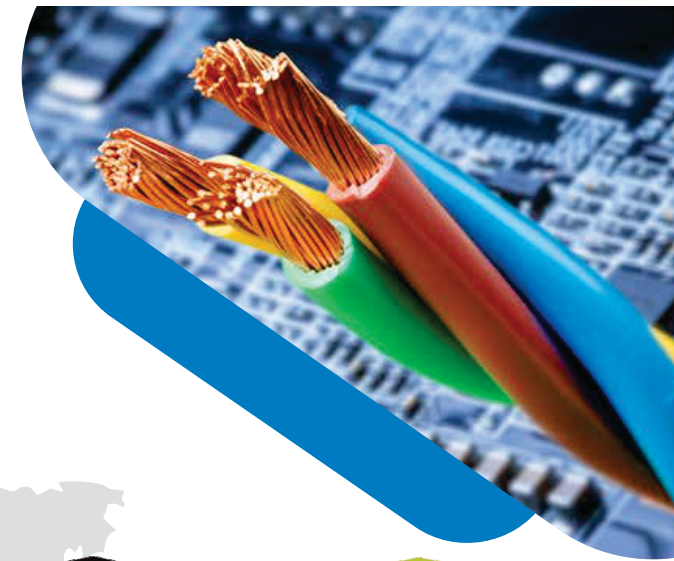
UAN (+923) 111 555 606
info@royalcables.pk

About Us

We have with us around a decade of valuable industry experience in meeting the demands of cables and wires used in industrial, commercial and residential settings. We are one of the well known manufacturer and supplier PVC insulated cable, PVC insulated wire, house wires, poly winding wires, aluminum cables, multi core cables, electrical power cables, non ferrous metal, cables for panel wiring, solid wires, signal and copper cables.

An ISO 9001 certified company, our business operations are led under the leadership of Chief Executive. His experienced guidance provided in the involved operations, service support of experienced industry professionals & modern manufacturing facilities allow us to successfully handle the involved operation demands

ROYAL WIRE & CABLES (Pvt)Ltd



"Royal Cable Company is committed to providing Customers with the Right Product at the Right Time."



C.E.O MESSAGE

It is my pleasure to welcome you to **Royal Cables**. I hope the information here provides you with a greater understanding of our company, our brand promise and our core beliefs. We have a proven track record of top-quality services, with reliability and care, to the full satisfaction of our clients. We have built long term relationship with our valued customers. As I look back to when I started this business, it gives me immense pleasure to see the rapid growth of **Royal Cables**. In a very short span of time we look forward to an outlook of a very promising future. with earning our valuable clients trust with in a One Year with a rapid growth. In this era of overwhelming competition we provide our clients with the best possible tailored solutions to suit their needs.

The appeasement of our clients is the trait by which we measure our quality of service. **Royal Cables** is recognized for its quick adaptation and response to meet the needs of the client. Our dedicated staff is here to make sure you are taken care of and focused on your business or pleasure. I want to assure you that when you sign up for our services at **Royal Cables**, you can be confident that you will always be dealing with a professional organization that seeks to create a long term relationship with you.



BRIEF PROFILE



INTRODUCTION

Royal Cables it is one of the leaders among manufacturers and suppliers of a comprehensive range of quality wires and cables for different industrial requirements. Royal Cables continues to play a leading role in the manufacturing of cables with the intent to further strengthen its position for its quality products. With our experience and extensive industry knowledge, we have been able to face the challenges of the global market place and deliver quality products in adherence with market standards and parameters.

Whatever is your specification or quantity desired, our expertise and quality of service always remains the same. Modern production and techniques and flexible processes and procedures allow us to offer efficient service for small batch as well as large orders.

Royal Cables is a customer oriented company and work with the objective of achieving maximum customer satisfaction. The company has adopted innovative procedures and practices to meet customer expectations every time they deal with us. We always welcome any feedback or suggestions from clients in order to serve them better.

The Company sells its cable products primarily to government agencies, telecommunications network operators and large construction companies and subcontractors bidding for government contracts. Telecommunications cable products manufactured by the Company are largely used as access lines to connect buildings and residences to feeder and trunk cables. Power cable manufactured by the Company is used primarily in power transmissions for public lighting, outdoor installations, commercial and residential buildings. Enameled wire is sold primarily to private sector manufacturers of electric motors for use in various consumer appliances. The Company maintains local sales personnel in the country where it has sale and marketing operations, and export sales are conducted through independent the Company's own sales personnel. The Company principally competes on the basis of product quality and performance, reliability of supply, timely delivery, customer service and price

The conception that we have of ourselves in all business actions is shaped by the highest level of quality – from the development and production of our products and solutions to sales and services. When speaking of wires, cables, cable systems as well as wiring systems for the automotive industry and further industries, there is no way around Royal Cable.

VISION

We will work to define and understand every process performed by the organization and continuously strive to improve the quality at different stages of production and supply. Our aim is to grow by providing standard and superior Wire and cable products and support services that are always a step ahead, eco-friendly, and loved by our customers.

We will give our customers every reason to rely on us and will achieve our vision by developing win-win partnerships with our clients and open communications with our all stake holders including associates, customers and suppliers.

MISSION

Our mission is to lead the industry to the front with complete commitment and dedication on standards, quality, productivity and customer satisfaction.

Another major asset to our sophisticated production facilities and technical expertise is our team of experienced and qualified people who are committed to achieve maximum customer satisfaction by delivering superior value products.

WHY ROYAL CABLE?

Some of our specialties that make us a reliable business partner to work with are:

- Long experience and extensive industry knowledge.
- State-of-the-art production facilities.
- Timely deliveries.
- Proven record in successful of small as well as bulk orders.
- Cost effectiveness.
- Excellent after sales service.

SOCIAL COMMITMENT

We, at Royal Cable, understand our responsibilities towards society and environment in which we operate. We give prime consideration to health & safety, environmental protection & accident prevention in line with any other phases of operation or administration.

We are a socially conscious company and work with the policy of providing and maintaining a safe & healthy work environment. Our operating procedures and organizational policies ensure strict adherence to practices that will safeguard the interest of all stakeholders, society and the environment. The various tests and processes that we undertake to ensure the consistent quality and performance of our products are:

- Copper Resistance Test
- Tensile Strength
- Elongation
- Insulation Resistance
- High Voltage Test
- D.C Resistance
- Thickness of Insulation

ROYAL CABLES

After Sales Service:

Our all sales team include trained and friendly personnel who are always ready to assist our clients regarding their various problems and requirements. Some of the services include:

- Assistance regarding product technical information, features, benefits and limitations.
- Guidelines about product process and application.
- Economical shade matching of compatible cable in order to achieve appropriate and reproducible shades.
- Field Technical Services - Field technical service include Visits, technical discussion, trials, and laboratory tests.
- Assistance regarding the identification of new products, promotion and launching.
- Analysis of different products, their comparison regarding cost effectiveness, limitations and weaknesses.

Quality Assurance Certificates, Approvals from Different Organization

To ensure that each product manufactured by us meets all standard parameters and norms of international market, we provide different quality assurance certificates.

The various quality assurance certificates provided by us to our clients are:

- Engineering-in-Chief's Branch (MES Army)
- Fauji Foundation • C & W • UET
- ISO 9001:2008 ISO 14001:2004 certified. • PSQCA

We lay special emphasis on key technologies, which enables us in providing customization facility to our clients. Wherein, we manufacture and produce a comprehensive range of Cables that cater to the requirement of various industries with utmost precision. We believe in providing reliable, durable and yet cost effective solutions to our esteemed clients. All our products under this category are manufactured in accordance with the client's specific demand & specification.

Quality Control Facilities

At Royal Cable, quality is our specialty. Committed to achieve excellence in the quality of products and services, we take special care in ensuring the quality and performance of our products. The various stages of production are intermittently marked by different quality control tests to maintain the performance and stability.



PRODUCT RANGE.

General wiring Cables:

PVC Insulated Copper Conductors and Aluminum Conductor
All type & all sizes.

Power Cables:

With Copper Conductors and Aluminum Conductors,
Armoured & Non Armoured
All type & all sizes HT, LT.

Flexible and Control Cables: All type & all Sizes.

Bare Copper Conductors: All type & all Sizes.

Aluminum Conductors: All type & all Sizes.

Telephone Cables: All type & all Sizes.

PRODUCT RANGE

Type	Specifications	Range	Application
General Cables	450/750 X 300/500 volts Bs-6004, BS-2004 Bs-6360, Bs 3360	Single & Multi cores Sizes up to 16 mm ² in Metric system 77/0.064 in Imperial System Copper & aluminum Conductors	House Wiring, Small Power Lighting in Industrial, Commercial & Residential Buildings
Power Cables	600/1000 volts 1900/3300 Volts BS- 6346, IEC: 502 Wapda Specifications 60,502	Single Core 25 mm-1000mm Multi Cores 25mm'- 300mm Copper & Aluminum Conductor Armored & Unarmored	Power Distribution in Manufacturing Plants & Heavy electrical Equipments
Control Cables	600/1000 Volts Bs-6346 Railway Specifications	Multi Core Up to 65 Cores with 1.5mm-4mm ² Conductor	Power & Industrial Equipment Control
Telecom Cables	JISC 3501 PTCL Specifications	Coaxial Cables JISC 3501 RG.6 & RG-11 From 1 pair to 100 Pair Telephone Cables	Dish Antenna, Cable TV Receiver, Indoor Telephone Connection
Power Cables	BS-6500 BS-6004 BS- 6360 IES-227	.50mm' to 630 mm Single core to 4- Core	Small Power Lighting/ Industrial Over head Crain Panell etc.
Power Cables	BS-5467 IEC- 502	1.5 mm' to 300 mm' Single Core to 4 Core LT.XLPE Cables	Power Distribution & Industrial use
Overhead Cables	BS-6360	All Sizes All Types	Power Distribution Overhead Transmission
Overhead Cables	WAPDA specification P-50 BS-2627 Bs-232 Bs -231 Bs-215	All Sizes All Types	Overhead Transmission

UNDERTAKING

With reference to captioned above, it is stated that Royal Cables'' undertakes the following responsibilities and liabilities;

1. All Wire & Cables shall conform with the quality assurance and description and other particulars of the Wire & Cables stated in the purchase order, and
2. All Wire & Cables shall conform to all samples, drawings, description and specifications finished and
3. All Wire & Cables shall be free from all defects, and
4. All Wire & Cables shall comply with any and all performance and other specification stated in the purchase order, and
5. All deliveries will be made up to British Standard Specifications, IE Cand
6. All wire & cables shall be under guarantee of Royal Cables for every Electrical Operation and laboratory Testing.

Test Report by the Royal Cables laboratory will be provided upon each consignment

**CURRENT RATINGS COMPARISON OF
IMPERIAL AND METRIC SIZES**

DIMENSIONS: Bare Soft Drawn Strawn Strwn Stranded Conductor

Number & Nominal Diameter of Wires in	Current Ratings 2 Cables Single Phase Am.p	Nominal Cross Sectional Area of conductor mm2	Current Ratings 2 Cables single Phase AMP
1/.044"	5	1.0	11
3/.029"	10	1.5	13
3/.036"	15	1.5	15
7/.029"	20	2.5	18
7/.036"	28	4	24
7/.044"	36	6	31
7/.052"	43	10	42
7/.064"	53	16	56
19/.052"	74	25	73
19/.064"	97	35	90
19/.072"	122	50	145
19/.083"	140	70	185
37/.072"	180	95	230
37/.083"	218	120	260

Conductor				Packaging	
Cross Sectional Area Nominal mm	Number and Nominal Diameter of Wire mm	Overall Diameter Approx mm	Max.DC Resistance at 20 C ohm/km	Net Weight Approx kg/km	Standard package m+/-5%
2.5 mm	7x0.26	2.0	7.4100	21	2000
4 mm	7x0.34	2.5	4.6100	34	2000
6 mm	7x0.42	3.1	3.0800	51	2000
10 mm	7x0.52	4.0	1.8300	86	2000
16 mm	7x0.64	5.1	1.1500	137	2000
25 mm	7x2.11	6.4	0.7270	217	2000
35 mm	7x2.48	7.5	0.5240	312	2000
50 mm	19x1.75	8.8	0.3870	408	1000
70 mm	19x2.11	10.6	0.2680	589	1000
95 mm	19x2.48	12.4	0.1930	818	1000
120 mm	37x2.00	14.0	0.5130	1032	1000
150 mm	37x2.22	15.5	0.1240	1273	1000
185 mm	37x2.48	17.4	0.991	1593	1000
240 mm	61x2.22	20.3	0.754	2094	1000
300 mm	61x2.48	22.9	0.0601	2650	1000
400 mm	61x2.81	25.7	0.470	3400	500
500 mm	61x3.18	28.8	0.0366	4314	500
630 mm	61x3.71	30.5	0.0283	5650	500

CURRENT CARRYING CAPACITY

Table: # 01 Single Core Cables with Conductor Pre 70°C Insulated & PVC Sheathed 600 / 1000 Volts

Cross Sectional Area mm ²	DC at 20 C maximum ohm/km	AC at 70 C in Flat Formation Approx ohm/km	AC at 70°C in Trefoil Formation Approx ohm/km	Direct Laid (Flat) Approx Amps	Direct Laid (Trefoil) Approx Amps	In Duct Approx Amps	Free (Flat) Approx Amps	Free (Trefoil) Approx Amps	In pipes Approx Amps
1.5mm	12.1	14.5	14.5	23	24	18	20	18	15
2.5mm	7.41	8.87	8.87	33	31	24	27	23	19
4mm	4.61	5.52	5.52	42	41	31	36	31	25
6mm	3.08	3.69	3.69	53	51	39	46	40	32
10mm	1.83	2.19	2.19	70	68	41	62	54	43
16mm	1.15	1.38	1.38	91	87	67	83	71	56
25mm	0.727	0.870	0.870	116	112	87	109	94	76
35mm	0.527	0.627	0.627	140	134	104	135	116	89
30mm	0.387	0.463	0.464	116	158	125	164	141	107
50mm	0.268	0.321	0.322	204	194	154	208	179	134
70mm	0.193	0.232	0.232	245	233	186	259	222	163
95mm	0.153	0.184	0.185	279	264	212	301	258	188
120mm	0.124	0.150	0.151	313	296	238	345	296	213
150mm	0.0991	0.1200	0.1205	354	334	270	399	343	243
240mm	0.0754	0.0922	0.0941	412	385	313	476	407	285
300mm	0.0601	0.0743	0.0767	466	433	353	551	469	324
400mm	0.0366	0.0593	0.0623	531	488	399	624	542	369
500mm	0.0283	0.0476	0.0513	603	546	449	747	624	417
630mm		0.0386	0.03431	686	609	501	875	717	470

ALUMINUM CONDUCTOR STEEL REINFORCED COMMONLY USED ACSR AND THEIR CHARACTERISTIC

Net Weight Approx	Aluminum Conductor	Steel Core	Diameter		Cross area of aluminum	Area of Complete Conductor	Rated Ultimate Strenght	D.C resistance at 20 C	Weight
			Aluminum Conductor	Steel Core					
	No/mm	No/mm	mm	mm	mm	mm	Kgs	Ohm/km	kg/km
Gopher	6/2.36	1/2.36	7.08	2.36	26.25	30.62	980	1.093	106
Rabbit	6/3.35	1/3.35	10.05	3.35	52.88	61.69	1875	0.543	214
Dog	6/4.72	7/1.57	14.15	4.71	104.88	118.53	3225	0.273	394
Lynx	30/2.79	7/2.79	19.53	8.37	1983.41	226.20	8192	0.158	842
Cuckoo	24/4.62	7/3.08	27.72	9.24	402.33	454.48	12385	0.072	1519
Rail	45/3.70	7/2.47	29.61	7.41	483.84	517.38	11874	0.062	1599
Cardinal	54/3.38	7/3.38	30.42	10.14	484.50	547.30	15262	0.062	1832

ALUMINUM CONDUCTOR STEEL REINFORCED CLAD STEEL REINFORCED COMONLY USED ACSR AND THEIR CHARACTERISTIC

Net Weight Approx	Aluminum Conductor	Steel Core	Diameter		Cross area of aluminum	Area of Complete Conductor	Rated Ultimate Strenght	D.C resistance at 20 C	Weight
			Aluminum Conductor	Steel Core					
	No/mm	No/mm	mm	mm	mm	mm	Kgs	Ohm/km	kg/km
Gopher /AW	6/2.36	1/2.36	7.08	2.36	26.25	30.62	1032	1.031	101
Rabbit /AW	6/3.35	1/3.35	10.05	3.35	52.88	61.69	1974	0.5116	203
Hare /AW	6/4.75	1/1.57	14.15	4.71	104.88	118.53	3550	0.2577	402
Lynx /AW	30/2.79	7/2.79	19.53	8.37	1983.41	226.20	8628	0.1461	790
Cuckoo /AW	24/4.62	7/3.08	27.72	9.24	402.33	454.48	13180	0.0687	1456
Rail /AW	45/3.7	7/2.47	29.61	7.41	483.84	517.38	12510	0.0584	1560

ALUMINUM CONDUCTOR STEEL REINFORCED CLAD STEEL REINFORCED COMONLY USED ACSR AND THEIR CHARACTERISTIC

Code Word	Naminal Size	Stranding and wire dia	Dia Complete Conductor	Calculated area of complete conductor	Ultimate strength	D.C resistance at 20 C	Weight
	Sq/mm	No/mm	mm	Sq/mm	Kg	Kg	kg/km
Gnat	25	7/2.21	6.63	26.85	469	1.0667	73.4
Ant	50	7/3.10	9.30	52.83	847	0.5419	144.4
Wasp	100	7/4.39	13.17	105.95	1633	0.2702	290.1
Arbustus	400	37/3.72	26.06	402.14	6304	0.0717	1108.7
Howthorn	600	61/3.55	31.95	603.78	8966	0.0479	1668.1



SOLAR DC WIRES

CURRENT CARRYING CAPACITY

Current carrying capacity according to method of installation

Cross Sectional Area of Conductor	Single Free in Air	Single Cable on a Surface	Two Loaded Cable Touching on a Surface
mm	A	A	A
1.5	30	29	24
2.5	41	39	33
4	55	52	44
6	70	67	57
10	98	93	79



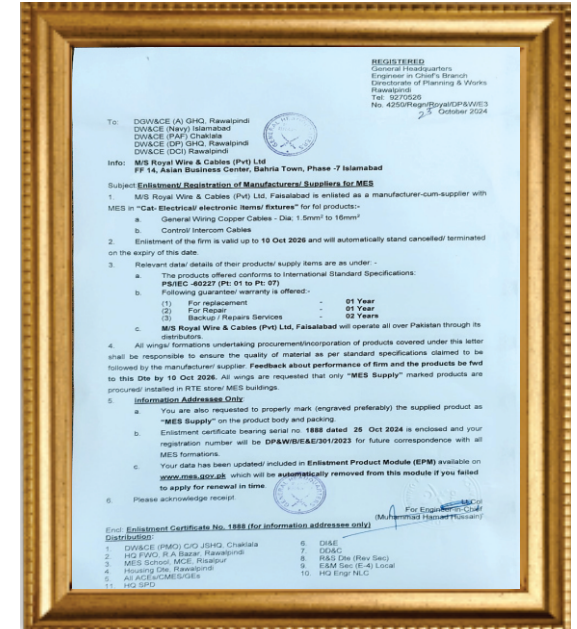
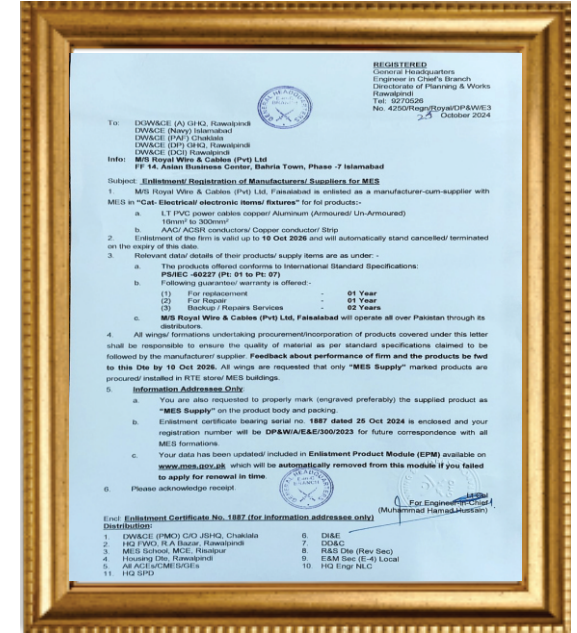
DE-RATING FACTOR

Air Temperature	Upto 60°C	70°C	80°C	90°C
DC RATING FACTOR	1.00	0.92	0.84	0.75

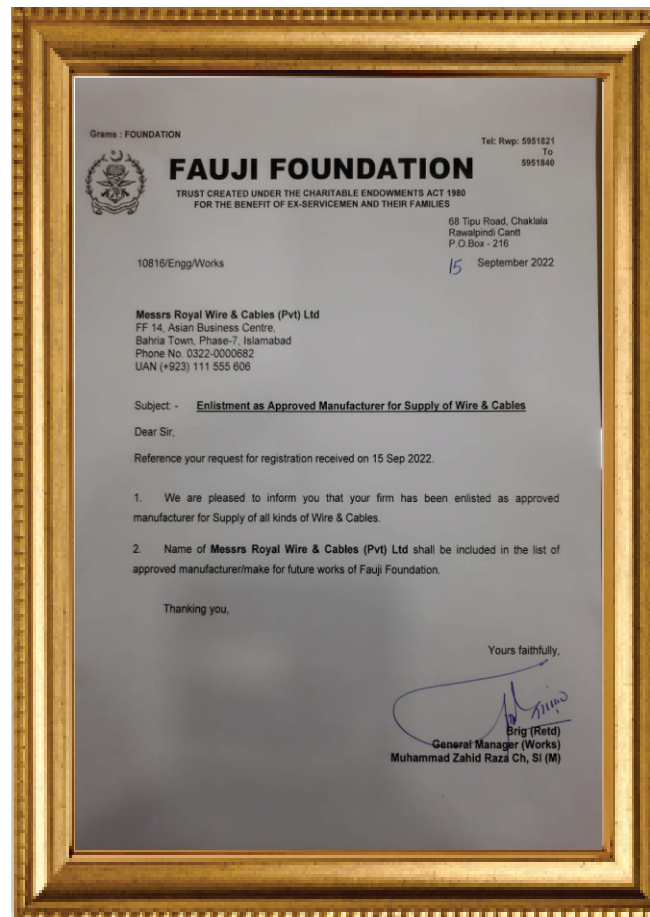
XLPO/UV
XLPO/PVC
PVC/PVC
All Size are Available



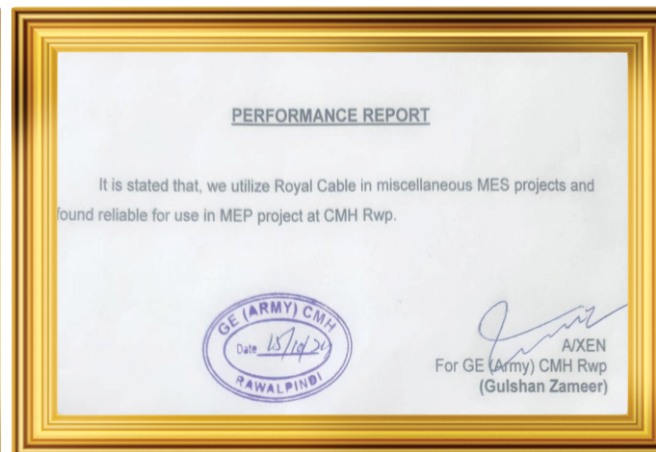
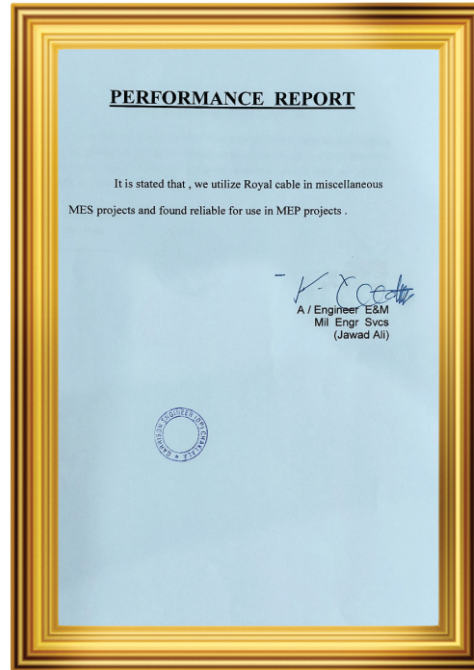
ENLISTMENT CERTIFICATE



ENLISTMENT CERTIFICATE



PERFORMANCE CERTIFICATE





TECHNICAL & SKILLES WORKERS





TECHNICAL & SKILLES WORKERS





The Name of Quality



**OUR VALUABLE
PROJECTS**



The Name of Quality



Islamabad | Rawalpindi | Lahore | Karachi | Faisalabad | Quetta |

801, G-Floor, Lawrence Lane, Near NLC HQ, Rawalpindi

UAN (+923) 111 555 606
info@royalcables.pk.com